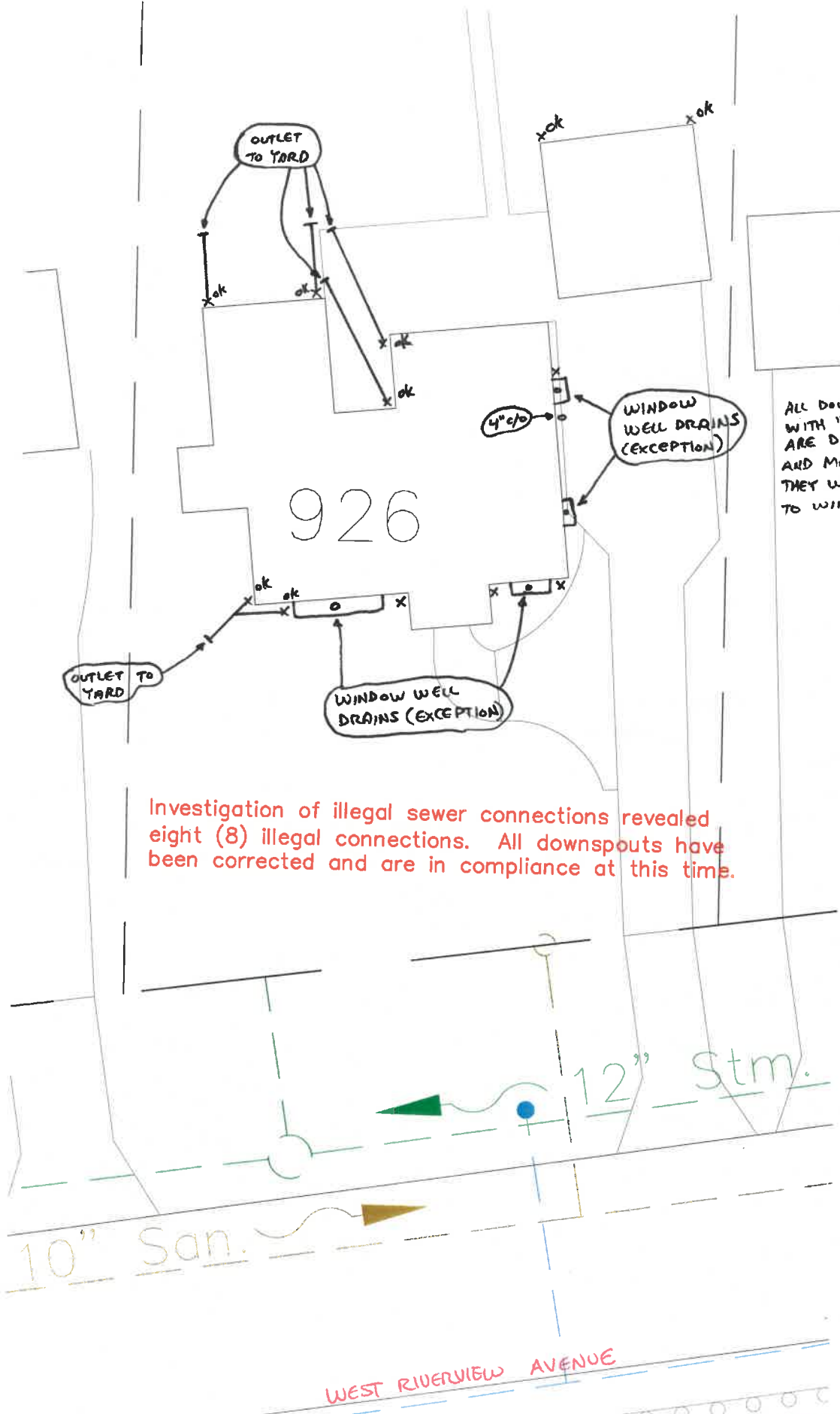


926 WEST RIVERVIEW AVENUE

2015
N
1"=20'



ALL DOWNSPOUTS MARKED WITH "X" ARE NOT "OK" ARE DEEMED AN EXCEPTION AND MAY STAY IN SINCE THEY WOULD STILL DRAIN TO WINDOW WELL DRAINS.

Investigation of illegal sewer connections revealed eight (8) illegal connections. All downspouts have been corrected and are in compliance at this time.

WEST RIVERVIEW AVENUE

SCANNED